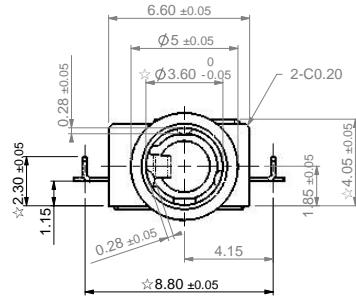
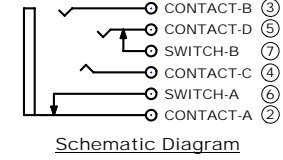
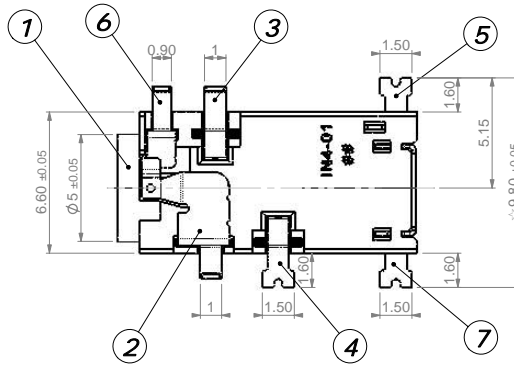
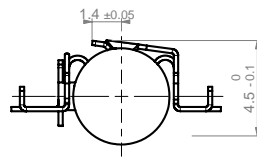


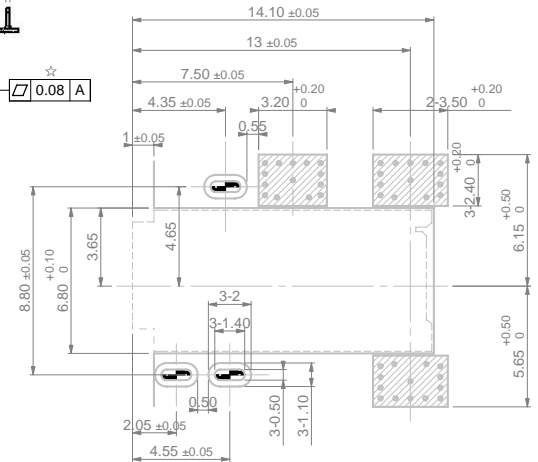
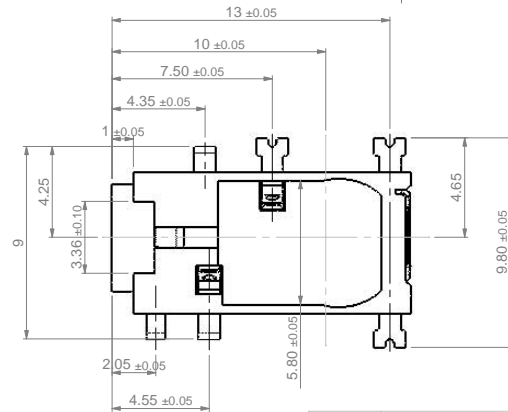
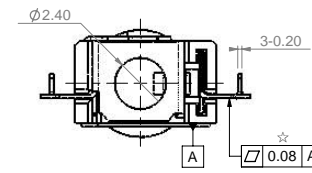
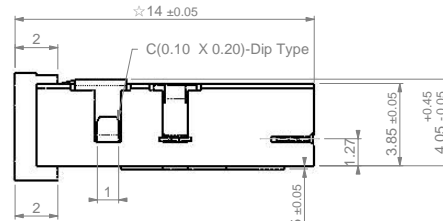
4POLE PLUG



PLUG 삽입 참조도 (CONTACT-A 유동거리)



Schematic Diagram



Recommended PCB Layout (JACK 방향 주의)

* Marking Information

I N 4 - # # # #
 IN4 : Model 구분 (Ø 3.5-4극)
 # # : 개발 Series
 # # : 금형 차수 / Cavity

* Specifications

1. Voltage Rating : 250V AC/DC
2. Current Rating : 1A/Pin
3. Operating temperature : -40 °C ~ +85 °C
4. Plug Insertion Force : 1.3 Kgf Max
5. Plug Withdrawal Force : 0.7 ~ 1.0 Kgf
6. Durability : 10,000 cycle(Plug)

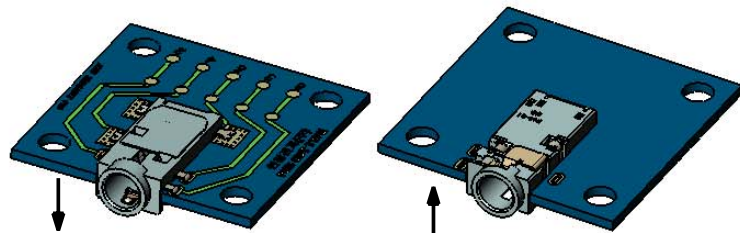
* Plating

- contact Area : Au (0.10µmMin.) over Ni (1.0~5.0µm)
 - Lead Area : Au (0.10µmMin.) over Ni (1.0~5.0µm)

* Note

1. ☆ = C.T.O
2. 평탄도는 Refolv 전, 후 0.08 Max. 를 만족할 것.
3. 지칭외 공차 ±0.05 적용
4. SMD 실장 방향 주의 할 것.
5. SWITCH-B는 필요시 회로 연결하여 사용 할 것.

PCB 실장 방향 참조도 SCALE(2:1)



| | | | | | |
|---|-----------|---|---------------------|---------|-------|
| 7 | SWITCH-B | 1 | C5210R-H | t0.20 | Ni+Au |
| 6 | SWITCH-A | 1 | C5210R-H | t0.20 | Ni+Au |
| 5 | CONTACT-D | 1 | Cu+Ti (YCuT-M 1/4H) | t0.20 | Ni+Au |
| 4 | CONTACT-C | 1 | Cu+Ti (YCuT-M 1/4H) | t0.20 | Ni+Au |
| 3 | CONTACT-B | 1 | Cu+Ti (YCuT-M 1/4H) | t0.20 | Ni+Au |
| 2 | CONTACT-A | 1 | Cu+Ti (YCuT-M 1/4H) | t0.20 | Ni+Au |
| 1 | HOUSING | 1 | ARLEN(E630NK) | UL94V-0 | BLACK |

| No. | PARTS NAME | Q'TY | MATERIAL | FINISH | REMARK |
|-------|------------|------|------------|----------|---------------------------|
| SCALE | UNIT | A3 | DRAWING | CHECKED | APPROVED |
| | | | H.J.HWANG | | |
| 4/1 | mm | | 2007.10.29 | | |
| | | | | TITLE | Ø 3.5 EARPHONE JACK-4POLE |
| | | | | MODEL | IJAN4-01 |
| | | | | CODE No. | |