

*** Marking Information**

IM 6 - #
 IM : Model 구분
 6 : 개발 Series
 # : 금형 차수(별수)
 # : 금형 Cavity

*** Specifications**

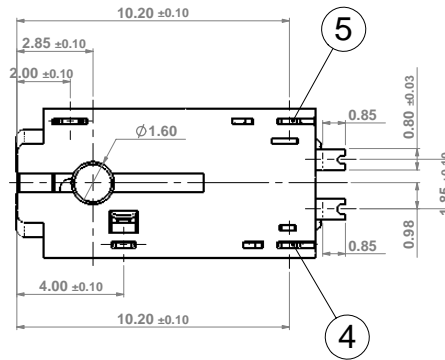
1. Voltage Rating : 250V AC/DC
2. Current Rating : 1A/Pin
3. Operating temperature : -55 °C ~ +85 °C
4. Plug Insertion Force : 1 Kgf Max
5. Plug Withdrawal Force : 0.5 Kgf Min
6. Durability : 10,000 cycle(Plug)

*** Plating**

- contact Area : Au (0.03~0.15 μ m) over Ni (1.0~5.0 μ m)
 - Lead Area : Au (0.03~0.15 μ m) over Ni (1.0~5.0 μ m)

*** Note**

1. ☆ = C.T.O
2. 평탄도는 Reflow 전, 후 0.08 Max. 를 만족 할 것.
3. 지정의 공차 ±0.05 적용



No.	PARTS NAME	Q'TY	MATERIAL	FINISH	REMARK
7	SWITCH-B	1	C5210R-H	t0.2	Ni+Au
6	SWITCH-A	1	C5210R-H	t0.2	Ni+Au
5	CONTACT-D	1	Cu+Ti(YCuT-M 1/4H)	t0.2	Ni+Au
4	CONTACT-C	1	Cu+Ti(YCuT-M 1/4H)	t0.2	Ni+Au
3	CONTACT-B	1	Cu+Ti(YCuT-M 1/4H)	t0.2	Ni+Au
2	CONTACT-A	1	Cu+Ti(YCuT-M 1/4H)	t0.2	Ni+Au
1	HOUSING	1	ARLEN(E630NK)	UL94V-0	BLACK

SCALE	UNIT	±0.05	DRAWING	CHECKED	APPROVED	TITLE	Ø 2.5 EARPHONE JACK - 4POLE
5/1	mm		H.J.HWANG			MODEL	IJAM4-06-D4
			2006.10.09			CODE No.	

INCHANG ELECTRONICS CO.,LTD.

REFERENCE DWG No.

SHEET 1 of 1

SYM	REVISION DESCRIPTION	DATE	REVISER	APPROVER